



# Friday Flyer

Head teacher: Ms S.E.Walker  
 Chair of Governors: Mrs E McLeod  
 Tel: 01287 650689  
 Web: [www.skeltonprimaryschool.co.uk](http://www.skeltonprimaryschool.co.uk)  
 Email: [office@skeltonprimaryschool.co.uk](mailto:office@skeltonprimaryschool.co.uk)

## Dear Families,

Welcome to this week's news. The children have enjoyed the wonderful Dick Whittington pantomime from the M & M Theatre Company this week. It was great! The stage is up and rehearsals are beginning for our many upcoming Christmas events. Please do check the calendar on the website.



### HYDRATION

Please remind your children that they should have their water bottles in school every day. They should try to drink a full bottle of water over the course of the school day to stay hydrated.

Please remember that Food Vouchers can be obtained through school. Also, we are gathering names for our bid to Cash for Kids for Christmas gifts. If you would like to nominate anyone, please contact Mr Woolf in school 650689 or [a.woolf@skeltonprimaryschool.co.uk](mailto:a.woolf@skeltonprimaryschool.co.uk)

## This week's House Champions



### Attendance

Our Target - 97%+



Well done to who Grey 1 who achieved 100% this week.



Whole school attendance - 96.8%

## Head Teacher Award

	Handwriting	Behaviour Badge	Teacher's Choice
GREEN	Mia McLeod	Aubery Claxton	Anabelle Mitchell
ORANGE	Caleb Ward	Leighton Peacock	Kian Watson
BLUE	Lois Leyland	Alex Swainson	
YELLOW	Joshua Ward	Tyler Matthews	Tyler Claxton
BROWN	Lennon Outhwaite	Maddie Smith	
GREY	Kaden Turner	Leeroy Burrows	Naia Adams
PURPLE	Evie Armstrong	Lilly Hodgson	Ava Bell
RED	Keira Shaw	Erin Heathcock	Jay Ozersky-Brown

### PARKING

Please can we remind you to park with consideration at 8.30am and 3pm. I have received a letter from a resident of Waverley Grove expressing concern about dangerous and obstructive parking. THANKYOU

### PARENT PARTNERSHIP

Our Parent Partnership team of parents and staff share information about school life and respond to enquiries and suggestions. Please join us. Our next meeting is Thursday 13<sup>th</sup> December.

## What's for Lunch Next Week?

WEEK 2	MONDAY	TUESDAY	WEDNESDAY	THURSDAY	FRIDAY
MEAT MAIN DISH	Chicken Casserole with Dumpling	Sausages	Roast Beef with Yorkshire Pudding	Spaghetti Bolognese with Crusty Bread	Salmon Fishcake / Fish Fingers with Chips
VEGETARIAN MAIN DISH	Tomato Pasta	Vegetarian Chilli	Cheese Roll	Margarita Pizza	Vegetarian Sausage
ACCOMPANIMENTS	Seasonal Vegetables Salad Bar	Seasonal Vegetables Salad Bar	Seasonal Vegetables Salad Bar	Seasonal Vegetables Salad Bar	Seasonal Vegetables Salad Bar
DESSERTS	Chocolate and Banana Slice	Sticky Toffee Muffins	Shortbread and Mandarins	Fruit Crumble and Custard	Homemade Cookie
FRESH FRUIT & YOGHURT	Fresh fruit and yoghurt	Fresh fruit and yoghurt	Fresh fruit and yoghurt	Fresh fruit and yoghurt	Fresh fruit and yoghurt
JACKET POTATO & SANDWICH SELECTION	Jacket Potato	Sandwich Selection	Jacket Potato	Sandwich Selection	Jacket Potato

## Leeroy's Joke Corner



How do you stop an astronaut's baby from crying?

You rocket!

### POVERTY PROOFING

You will recall that three years ago we received a poverty proofing assessment and as a result of requests from families, committed to reduce the charity work that we were involved in annually; choosing to divide our charity work over a two year cycle.

For that reason we are not involved in Children in Need this year but are supporting Comic Relief (March 15<sup>th</sup>) as listed on our annual calendar. We hope that you enjoy watching Children in Need on the TV tonight; donations can be made at Sainsburys or online.

## Next Week At A Glance

Monday	Breakfast club 7.45am £1.20, no need to book Come for a cuppa 9am - ALL WELCOME 442 Multisports Rec-Y6 3 - 4.15 Basketball Club Y5-Y6 3 - 4.15
Tuesday	Breakfast club 7.45am £1.20, no need to book Football Club Y3-Y6 3 - 4.15 Martial Arts Rec-Y6 Christmas Craft Club Rec-Y2 3 - 4.15 Christmas Craft Club Y3-Y6 3 - 4.15 Crochet Club Y6 3 - 4
Wednesday	Breakfast club 7.45am £1.20, no need to book FILM CLUB: Home Alone Finish: 4.30 Running Club Y2-Y6 3 - 4.15
Thursday	Breakfast club 7.45am £1.20, no need to book 442 Football Rec-Y6 3 - 4.15 Singing for Fun Rec-Y2 3 - 3.45 Netball Club Y4-Y6 3 - 4.15
Friday	Breakfast club 7.45am £1.20, no need to book Come for a cuppa 1.30pm - ALL WELCOME Choir 8am

## Skelton's Favourite Dish

We have been really pleased by the responses (over 230) to our school menu questionnaire. THANKYOU.

Our cook Mrs Pullman has met with Mellors and designed a three week menu that covers many of our children's favourites. The new menu cycle will begin on Monday. Please be assured that a roast diner will continue to be available every week, alongside many favourites, as well as the salad bar and a jacket potato or sandwich daily. Please note that the additional favourites that you suggested will be carefully considered by Mrs Pullman when extras are provided.

We also plan to develop a photo menu to support the choices for our youngest children - thank you for the suggestion!

WEEK 1	MONDAY	TUESDAY	WEDNESDAY	THURSDAY	FRIDAY
<b>MEAT MAIN DISH</b>	Meatballs in a Tomato Sauce with Spaghetti	Chicken Stew	Roast Gammon with Pineapple and Roast Potatoes	Mince & Dumpling	Fish of the Day with Chips
<b>VEGETARIAN MAIN DISH</b>	Vegetarian Shepherd's Pie	Margarita Pizza	Quorn Hotdog	Hot Cheese Wrap	Quorn Nuggets
<b>ACCOMPANIMENTS</b>	Seasonal Vegetables Salad Bar	Seasonal Vegetables Salad Bar	Seasonal Vegetables Salad Bar	Seasonal Vegetables Salad Bar	Seasonal Vegetables Salad Bar
<b>DESSERTS</b>	Apple Crumble and Custard	Chocolate Crunch	Strawberry Whip	Oaty Biscuit	Fruit and Ice Cream
<b>FRESH FRUIT &amp; YOGHURT</b>	Fresh fruit and yoghurt	Fresh fruit and yoghurt	Fresh fruit and yoghurt	Fresh fruit and yoghurt	Fresh fruit and yoghurt
<b>JACKET POTATO &amp; SANDWICH SELECTION</b>	Jacket Potato	Sandwich Selection	Jacket Potato	Sandwich Selection	Jacket Potato

WEEK 2	MONDAY	TUESDAY	WEDNESDAY	THURSDAY	FRIDAY
<b>MEAT MAIN DISH</b>	Chicken Casserole with Dumpling	Sausages	Roast Beef with Yorkshire Pudding	Spaghetti Bolognese with Crusty Bread	Salmon Fishcake / Fish Fingers with Chips
<b>VEGETARIAN MAIN DISH</b>	Tomato Pasta	Vegetarian Chili	Cheese Roll	Margarita Pizza	Vegetarian Sausage
<b>ACCOMPANIMENTS</b>	Seasonal Vegetables Salad Bar	Seasonal Vegetables Salad Bar	Seasonal Vegetables Salad Bar	Seasonal Vegetables Salad Bar	Seasonal Vegetables Salad Bar
<b>DESSERTS</b>	Chocolate and Banana Slice	Sticky Toffee Muffins	Shortbread and Mandarins	Fruit Crumble and Custard	Homemade Cookie
<b>FRESH FRUIT &amp; YOGHURT</b>	Fresh fruit and yoghurt	Fresh fruit and yoghurt	Fresh fruit and yoghurt	Fresh fruit and yoghurt	Fresh fruit and yoghurt
<b>JACKET POTATO &amp; SANDWICH SELECTION</b>	Jacket Potato	Sandwich Selection	Jacket Potato	Sandwich Selection	Jacket Potato

WEEK 3	MONDAY	TUESDAY	WEDNESDAY	THURSDAY	FRIDAY
<b>MEAT MAIN DISH</b>	Chicken Dinner	Beef Burger in a Bun	Roast Pork with Apple Sauce	Chicken Curry with Brown Rice	Fish of the Day with Chips
<b>VEGETARIAN MAIN DISH</b>	Cheese Puff	Vegetarian Bolognese	Quorn Mince and Dumpling	Margarita Pizza	Vegetarian Lasagne
<b>ACCOMPANIMENTS</b>	Seasonal Vegetables Salad Bar	Seasonal Vegetables Salad Bar	Seasonal Vegetables Salad Bar	Seasonal Vegetables Salad Bar	Seasonal Vegetables Salad Bar
<b>DESSERTS</b>	leed Fruit Sponge	Flapjack	Chocolate Cake and Custard	Fruit in Jelly	Muffin
<b>FRESH FRUIT &amp; YOGHURT</b>	Fresh fruit and yoghurt	Fresh fruit and yoghurt	Fresh fruit and yoghurt	Fresh fruit and yoghurt	Fresh fruit and yoghurt
<b>JACKET POTATO &amp; SANDWICH SELECTION</b>	Jacket Potato	Sandwich Selection	Jacket Potato	Sandwich Selection	Jacket Potato

## YOU DECIDE!

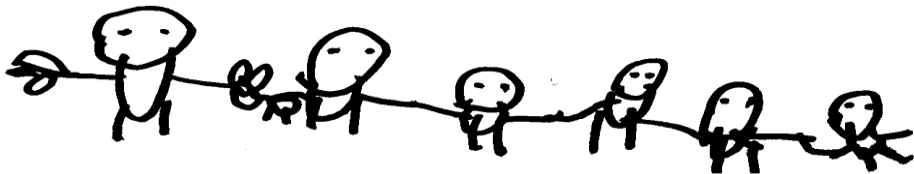
This week we hosted a meeting of the You Decide! Steering committee. They have been tasked with ensuring that a pot of £3000 is made available by BID (up to £100 by an individual or up to £500 by a group) to the community of New Skelton.

The money could be used to enhance your street, by for example, planting some flowers/plants or a group that you are part of, for example buying coffee facilities for when you meet.

There is a very simple application form to complete and the bid process is open to anyone with a plan. The outcomes will be decided by community vote in early spring at an event hosted here in school.

The only limitation is that the impact must be felt within the immediate community of New Skelton.

If you are part of a group or have an idea of your own, please put your thinking caps on and look out for the application forms that will be coming through your door shortly.



## REMEMBRANCE GARDEN

You will recall that the children worked with staff in the summer term to build a peace garden. Part of the garden will become a remembrance area. Some of our children have suffered bereavements have made remembrance pebbles and put them in the area so that they can go and visit if they would like to. If you would like to decorate a pebble at home in memory of any of your family or friends, you are very welcome to bring one in and add it to the remembrance area.



COMING NEXT WEEK:

## Christmas Decoration Design Competition

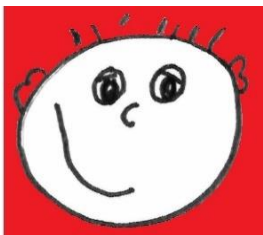


SEARCH OUT THE JUNK MODELLING & GREAT IDEAS

INTERESTING ARTICLE OF THE WEEK

### **A NEW DINOSAUR!**

**It was reported in the news this week that a new species of dinosaur who 110 million years ago has been found in Argentina. It is related to other herbivores (animals that only eat plants.) Palaeontologists (people that study fossils) from Spain and Argentina found bones of one adult and two young**  
*How do you think they know it was a herbivore???*

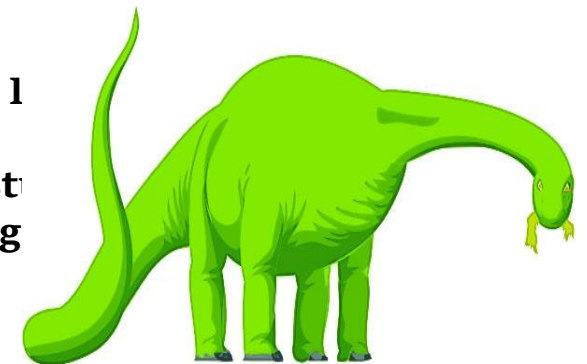


SILLIEST HEADLINE OF THE WEEK FROM THE TIMES

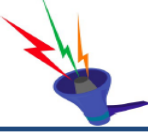
**“Angry seals chase angler up a cliff!”**

Find out more by checking out [bbc.co.uk/newsround](http://bbc.co.uk/newsround) or read **The Week** in our library.

*From Tommy & Ellis your roving reporters!*



## Have your say ....



Tell us where you think we should be focussing. We will review your submissions every month to help inform our future policing activity. Please complete our short "Have your say form" by following this link: <https://goo.gl/czRSz7>

## You said, we did....

You said.... You were concerned about burglary offences in Guisborough

We did....a male was arrested and later remanded in custody for 4 offences including house and retail burglary and then using a stolen bank card.

## Your Neighbourhood Team

To view your local neighbourhood team please visit <https://goo.gl/3eVWmVf>

## Come and meet us

Members of the team will be at the following events/meetings please come along and meet us.

22/11/18 10:00—Loftus NAP. Loftus Development Trust, Loftus Development Trust, High Street, Loftus

01/12/18 — Saltburn Christmas lights switch on

## 101 call data October 2018

Total number of calls: 17367. Average wait time 57 seconds. Longest wait time 34:54

## Follow us on social media



<https://goo.gl/9wvK0Q>



@ClevelandPolice

Also join Cleveland Connected by visiting [www.clevelandconnected.com](http://www.clevelandconnected.com)

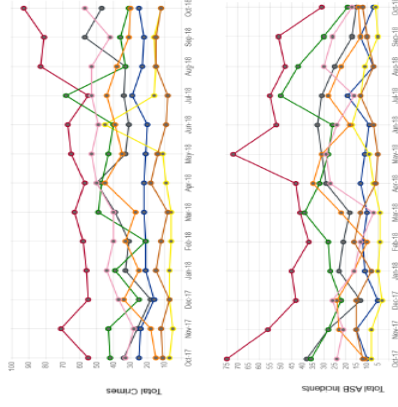
## Neighbourhood Policing

## Guisborough Newsletter - October 2018



## Performance

The Guisborough sector covers the wards of Brotton, Guisborough, Hutton, Lockwood, Loftus, Saltburn, Skelton and Westworth.



## Sector areas of focus

The current areas of focus for this sector are:

- Antisocial Behaviour in Loftus: We will continue to work with the Local Authority Anti-Social Behaviour Officer to combat the youth ASB in the area.
- Burglary offences in Guisborough, focusing on garages that have been left insecure and house burglary.

## News

- Anti-Social Behaviour Injunctions have been granted regarding individuals in Lingdale with a further hearing in court to come.
- After some work done in Loftus to establish some intelligence, we discovered a large scale cannabis farm. After removal of the plants and forensic examination at the scene, the investigation has been passed to the Community Drugs Enforcement Team.
- We worked with RCB officers who served two Community Protection Notices, in addition two Anti-Social Behaviour Injunctions were issued at Court for youths in Loftus and Carlin How.
- Please follow us on [Guisborough NPT](https://www.facebook.com/GuisboroughNPT) on Facebook this will give you an update on any issues within the area, crime prevention advice but also following the day to day activity of your local officers.

### Flu Immunisation Catch-up Clinics 2018

Date	Time	Venue
Sat 17 Nov 2018	09:00 - 12:00 then 12:30 - 16:00	Tuned In, Majuba Road, Redcar TS10 5BJ,
Sat 24 Nov 2018	09:00 - 12:00 then 12:30 - 16:00	Tuned In, Majuba Road, Redcar TS10 5BJ,
Sat 01 Dec 2018	09:00 - 12:00	Middlesbrough Central Library, Centre Square, Middlesbrough, TS1 2AY
	13:30 - 16:00	Thornaby Family Hub (High Flyers), 5 Tedder Ave, Thornaby, Stockton-on-Tees TS17 9JP
Sat 15 Dec 2018	09:00 - 12:00	Middlesbrough, Central Library, Centre Square, Middlesbrough, TS1 2AY
	13:30 - 16:00	Thornaby Family Hub (High Flyers), 5 Tedder Ave, Thornaby, Stockton-on-Tees TS17 9JP

### Flu Immunisation Catch-up Clinics 2019

Date	Time	Venue
Thu 03 Jan 2019	09:00 - 12:00	Wynyard Road Community Centre
	13:30 - 16:00	The Eston Surgery, Low Grange Health Village, Normanby Rd, South Bank, Middlesbrough TS6 6TD
Fri 04 Jan 2019	09:00 - 12:00	25k Community Centre, Ayton Drive, Roseberry Square, Redcar, TS10 4EW
	13:30 - 16:00	Lawson Street Health Centre, Stockton on Tees, TS18 1HU
Sat 19 Jan 2019	10:00 - 12:30	Hartlepool Library, 124 York Rd, Hartlepool TS26 9DE
	13:30 - 13:00	Stockton High Flyer Hub Thornaby
Sat 26 Jan 2019	09:00 - 12:00	Middlesbrough Central Library, Centre Square, Middlesbrough, TS1 2AY
	13:30 - 16:00	Tuned In, Majuba Road, Redcar TS10 5BJ,

To book an appointment call The Immunisation Team on 0300 0030 013