



Friday Flyer

Friday, 18 January 2019

Head teacher: Ms S.E.Walker
Chair of Governors: Mrs E McLeod
Tel: 01287 650689
Web: www.skeltonprimaryschool.co.uk
Email: office@skeltonprimaryschool.co.uk

Dear Families,

Welcome to this week's news.

INTERESTING FACT OF THE WEEK

MORE CHRISTMAS TREE FUN!

Around 200 Christmas trees have been donated to Colchester Zoo for the animals to enjoy. Animals are being encouraged to play with the trees and staff hide the food in them.



SILLIEST HEADLINE OF THE WEEK

Move Over Pizza Rat, Meet Egg Roll Squirrel!

From newyork.cbslocal.com

From our roving reports Ellis & Tommy

Attendance

Our Target - 97%+

Well done to Yellow 3, Grey 2 & Red 1 who achieved 100% this week.



Whole school attendance - 97.5 %



This week's House Champions



Head Teacher Award

	Number Bonds & Tables	Behaviour Badge	Teacher's Choice
GREEN	Albie Dixon-Turner	Ethan Brooks	Alanah Keeler
ORANGE	Mia Shaw	Grayson Smith	Poppy Hodgson
BLUE	Kalin Fielden	Freddie Harris	
YELLOW	Albie Cotterill	Thea Moorhouse	Lola Jefferson
BROWN	Angel King	Pippa Garratt	
GREY	Ruby Hindle	Jayden Greaves	Lilly-Rose Bouttell
PURPLE	Max Dowson	Scarlett Benson	Daniel Wright
RED	Keira Shaw	Kara McLeod	Rhys Blows

DEBATING CLUB – THE BIG DEBATE!

This week at debate club, we discussed:
Should we wear slippers inside school, instead of shoes?
Many excellent views were put forward, but the result of the final vote was: **Yes!**

What's for Lunch Next Week?

	WEEK 3	MONDAY	TUESDAY	WEDNESDAY	THURSDAY	FRIDAY
MEAT MAIN DISH		Chicken Dinner	Beef Burger in a Bun	Roast Pork with Apple Sauce	Mild Chicken Curry with Brown Rice	Fish of the Day with Chips
VEGETARIAN MAIN DISH		Cheese Puff	Vegetarian Bolognese	Quorn Mince and Dumpling	Margarita Pizza	Vegetarian Lasagne
ACCOMPANIMENTS		Seasonal Vegetables Salad Bar	Seasonal Vegetables Salad Bar	Seasonal Vegetables Salad Bar	Seasonal Vegetables Salad Bar	Seasonal Vegetables Salad Bar
DESSERTS		Iced Fruit Sponge	Flapjack	Chocolate Cake and Custard	Fruit in Jelly	Muffin
FRESH FRUIT & YOGHURT		Fresh fruit and yoghurt	Fresh fruit and yoghurt	Fresh fruit and yoghurt	Fresh fruit and yoghurt	Fresh fruit and yoghurt
JACKET POTATO & SANDWICH SELECTION		Jacket Potato	Sandwich Selection	Jacket Potato	Sandwich Selection	Jacket Potato

Leeroy's Joke Corner



Where do rabbits go after they get married?

On their bunny moon

School Council

Our first meeting of 2019 was very productive! We focused on our assemblies and decided what we would like to share with the rest of the school. Make sure to keep a look out for our upcoming 'Reading' badge competition! Details to follow.

Next Week At A Glance

Monday	Breakfast club 7.45am £1.20, no need to book Come for a cuppa 9am – ALL WELCOME 442 Multisports Rec-Y6 3 – 4.15 Basketball Club Y5-Y6 3 – 4.15
Tuesday	Breakfast club 7.45am £1.20, no need to book Football Club Y5-Y6 3 – 4.15 Reading Club Y3-Y4 3 – 4.15 Martial Arts Rec-Y6
Wednesday	Breakfast club 7.45am £1.20, no need to book Top Trumps Club Y3-Y6 3 – 4.15 Running Club Y2-Y6 3 – 4.15 Film Club Y2-Y6 Finish:4.30 Film: Alice In Wonderland
Thursday	Breakfast club 7.45am £1.20, no need to book 442 Football Club Rec-Y6 3 – 4.15 KS1 Science Club Y1-Y2 3 – 4.15 KS2 Science Club Y3-Y4 3 – 4.15 Singing for Fun Rec-Y2 3 – 3.45
Friday	Breakfast club 7.45am £1.20, no need to book Choir 8am

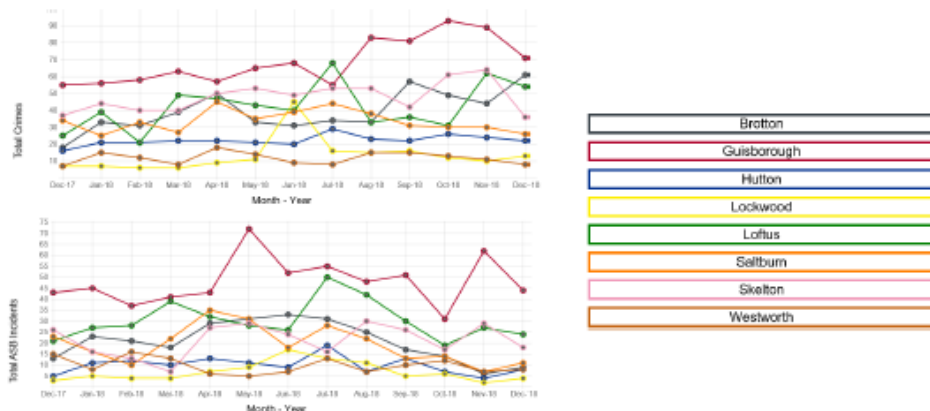
Neighbourhood Policing

East Cleveland Newsletter - January 2019



Performance

The Guisborough sector covers the wards of Brotton, Guisborough, Hutton, Lockwood, Loftus, Saltburn, Skelton and Westworth.



Sector areas of focus

The current areas of focus for this sector are;

- Crime and Antisocial Behaviour in Loftus: We will continue to work with the partner agencies to combat crime and ASB in the ward.
- Burglary offences throughout Guisborough.
- Anti social behaviour in Bakehouse Square, Guisborough

News

- We hope everyone had a fantastic Christmas and wish you all a Happy New Year!!
- A Criminal Behaviour Order was obtained after excellent work by our partners at RCBC and served on a male in the Skelton area after a series of incidents across the ward.
- We continue to listen to our community in Ungdale and have made arrests for theft, disqualified driving and breaching an Anti social behaviour injunction.
- Brotton ward has had the lowest recorded anti social behaviour in November and December than any time in the previous 12 months
- Please follow us on [Guisborough NPT](#) on Facebook this will give you an update on any issues within the area, crime prevention advice but also following the day to day activity of your local officers.



School Procedures due to Inclement Weather

Guidance - Parent Copy 2018/19



In the event of inclement weather, we will try our best to maintain service as normal for you. We really appreciate your patience and support in this matter.

Once school is open for the day, we will remain open. Should heavy snowfall occur during the day and you are concerned about getting your child home safely then you are welcome to collect your child early.

If you wish to discuss the reasons behind a school closure, please do not hesitate to contact the Headteacher or Chair of Governing Body through the school office.

⊕ *** The health and safety of everyone who comes onto our site is of the utmost priority.***

COMING TO SCHOOL

The FS1 gate and entrance will be open along with the Dots 'n' Spots and [Bylands Rd](#) entrances.

Children should enter the building either through FS1 or the back of the Upper hall. All of your children can come in through the same entrance. Please use whatever entrance is most convenient for you.

GOING HOME

The FS1 gate and entrance will be open along with the Dots 'n' Spots and [Bylands Rd](#) entrances.

ALL CHILDREN SHOULD GO TO THE YOUNGEST SIBLING'S EXIT DOOR

All children in FS1, FS2, Y1, Y2 will leave at 2.45 with their siblings

1. Nursery will leave from Nursery at 2.45 joined by all older siblings.
2. Reception children will leave from Nursery at 2.45 joined by all older siblings.
3. Year 1 will leave from the Upper hall at 2.45 joined by all older siblings.
4. Year 2 will leave from the Upper hall at 2.45 joined by all older siblings.

Older children (without younger siblings) will leave at 3.00.

5. Year 3 will leave from the Year 4 corridor exit at 3.00 (unless they have already left with siblings via Nursery or the Upper hall.) See points 1-4. They will be joined by older siblings. To leave together.
6. Year 4 and 5 will leave through their usual exits and time, they too will be joined by older siblings. (unless they have already left with younger siblings)
7. Year 6 without siblings will leave from their usual door at their usual time.
8. Children who are normally collected from the Nurture room will remain unchanged.
9. All Dots N Spots children will be collected from the Nurture room.

PLEASE DO CHECK IF AFTER SCHOOL CLUBS ARE GOING AHEAD FOR YOUR CHILD



SCHOOL CLOSURE

In the event of extreme inclement weather, such as heavy snowfall over night and anticipated continuation into the next day, we will follow the procedures below:

- The decision to open/ close the school will be made by the Headteacher by 7.30 a.m.
- Please listen for a closure or late start to the school day announcement on BBC Radio Tees, TFM, Magic & Radio [Zetland](#) from 7.30 a.m. The school website will also have an alert as soon as we are able to update it: www.skeltonprimaryschool.co.uk. a text will also be sent out.
- Staff will be available on the school site as soon as they can get in. Parents can contact school directly by telephone, we will put a message on the answer machine as soon as we can and send around text messages to our full contact list.



In the event of snowy weather, children need to come to school in wellies or boots, as we will take the children outside to enjoy the snow if there is no compacted ice and they have a change of footwear. We do ask children not to throw snowballs on school premises, this may sound unfair but if the snow becomes icy, it can be dangerous. If ground conditions are slippery, the site supervisor will endeavour to clear and grit a route. We ask you not to walk on flooded or untreated surfaces and to please be careful, allowing a little extra time to arrive at school safely, both on the paths leading to and from school and everywhere on our site.