



Friday Flyer

Head teacher: Ms S.E.Walker
Chair of Governors: Mrs H. Swarbrick
Tel: 01287 650689
Web: www.skeltonprimaryschool.co.uk
Email: office@skeltonprimaryschool.co.uk

Hello everyone,

It's been a great week in school, the sun has continued to shine and our children have settled back in very well.

Please remember that poppies are available in all bubbles within school for a small donation. THANK YOU



In this the Christmas term, we would normally be looking forward to welcoming you in for a number of special events. This year will be a little different. Nevertheless, all children:

- will be sharing a little personal report with you shortly about what they have achieved so far this year
- will contribute to a year group show on our YOUTUBE channel
- will enjoy a class party in the last week of term
- will enjoy a Christmas lunch on the last day of term and wear clothes of their choice

and lots more besides! Everyone will be very busy. Have a good weekend. Ms Walker

Attendance

OUR ATTENDANCE TARGET is 97%

ATTENDANCE THIS WEEK – 97.4%

CLASSES WITH 100% THIS WEEK – Blue 1, Blue 3, Grey 2 & Red 3

Head Teacher Award

	General Knowledge	Behaviour Badge	Teacher's Choice
GREEN	Charlotte Townley		Albie Pearson
ORANGE	Leeson McWilliams	Emilia Shaw	
BLUE	Felicity Hanson-Jeffels	Alanah Keeler	Sadie Tavener
YELLOW	Isla Neave	Sonny Starling	Sebastian Shaw
BROWN	Thomas Andrews	Indy Allan	Judd Johnson
GREY	Aryan Gill	Tyler Claxton	Phoebe Haigh
PURPLE	Joshua Richardson	Kayla Carr	Kaden Turner
RED	Ethan Plunkett	Seth Hodgson	Eden Curnow

HOUSE POINTS

BOULBY	3	HILLTOP	4
CATNAB	1	TRANSPORTER	2

KEEPING SAFE & WARM

We are advised to keep classrooms well ventilated and so at least one window is always open along with internal doors. Please ensure that your child has their cardigan/ jumper/ fleece to keep them comfortable in class.

DESIGN A CHRISTMAS CARD COMP

We would love to receive your designs, especially those with a rainbow or something symbolic of 2020. Please email photographs or computer designs to christmascardcompetition@skeltonprimaryschool.co.uk

Please send with your name and class teacher's name by Monday 9th November.



Stanley's Joke Corner



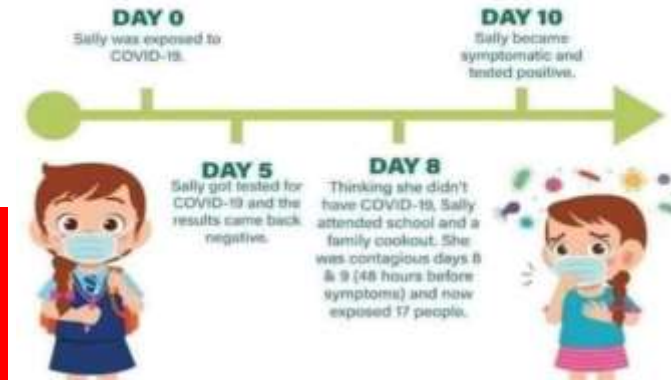
What was Guy Fawkes' favourite meal?

Bangers and mash

COVID-19 INCUBATION TIMELINE

COVID-19 has up to a 14 day incubation period

SALLY WAS EXPOSED TO COVID-19.



NEXT WEEK AT A GLANCE

Monday	Breakfast club 7.45am
Tuesday	Breakfast club 7.45am
Wednesday	Breakfast club 7.45am
Thursday	Breakfast club 7.45am
Friday	Breakfast club 7.45am

What's for lunch next week?

CLASSROOM MENU Week 2 - Year 2, Year 4, Year 5					
	Monday	Tuesday	Wednesday	Thursday	Friday
Meat Dish	Fork sausage bun	Ham pizza with wedges & veg	Roast Pork Sandwich with veg	Chicken tikka with rice and veg	Fish fingers with chips & veg
Vegetarian Dish	Quorn sausage bun	Cheese & tomato pizza with wedges & veg	Tomato pasta with crusty bread	Vegetarian tikka with rice & veg	Quorn burger with chips & veg
Sandwich	Tuna wrap Ham sandwich Cheese sandwich	Tuna wrap Ham sandwich Cheese sandwich	Tuna wrap Ham sandwich Cheese sandwich	Tuna wrap Ham sandwich Cheese sandwich	Tuna wrap Ham sandwich Cheese sandwich
Dessert	Shortbread Fruit Pot	Flapjack Fruit Pot	Cookie Fruit Pot	Marble sponge Fruit Pot	Chocolate orange cookie Fruit Pot

HALL MENU Week 2 - PS1, Year 1, Year 3, Year 6					
	Monday	Tuesday	Wednesday	Thursday	Friday
Meat Dish	Sausages, onion gravy & mash with veg	Ham pizza with wedges & veg	Roast pork dinner	Chicken tikka with rice and veg	Fish fingers with chips & veg
Vegetarian Dish	Quorn sausages, onion gravy & mash with veg	Cheese & tomato pizza with wedges & veg	Tomato pasta & crusty bread	Vegetarian tikka with rice & veg	Quorn burger with chips & veg
Jacket option	Beans, cheese or tuna	Beans, cheese or tuna	Beans, cheese or tuna	Beans, cheese or tuna	Beans, cheese or tuna
Dessert	Shortbread Fresh fruit yoghurt	Flapjack Fresh fruit yoghurt	Strawberry whip Fresh fruit yoghurt	Marble sponge Fruit Pot yoghurt	Chocolate orange cookie Fresh fruit yoghurt



Support for parents/carers who are caring for a child/young person (0-25 years) with emotional or mental health difficulties



Support groups



Digital and 1:1 support



Involvement opportunities



Training

Well done & thankyou Lily Mae!

Our very own Lily Mae Dunnakey has raised £117 for Children in Need while beach cleaning in both Redcar & Skinningrove. ! WOW !



WHARTON ARMS & HA' PENNY TEA ROOMS

Are collecting Christmas gifts, toiletries and selection boxes for children who may otherwise be having a tough Christmas this year. IF you can help at all, please do so.

Please drop any donations at the Wharton Arms.

Operation Christmas and other family support.

As in previous years, we are involved with TFM's Cash 4 Kids charity to provide Christmas presents to families who would struggle otherwise to provide them. If you or a family you know will struggle this Christmas to provide presents for children, please contact me to arrange further support.

Please don't be embarrassed as we can sort discretely. We all know how tough 2020 has been for our families who have been furloughed or made redundant.

Have you been furloughed? Are you struggling financially?

If so, we can support with foodbank referrals to help in the coming weeks of lockdown and beyond.

For further information or support for any of these issues, please contact Mr Woolf via the school phone number or email direct to:

a.woolf@skeltonprimarieschool.co.uk



For more information contact the team:

07377 213952

support@rollercoasterfs.co.uk

Find us on social media:

@rollercoasterparentsupport

@rollercoasterP5



NHS
West, East and North Yorkshire
County Durham
Stock & County Durham

Germ Science: Why Handwashing Matters



Everywhere you look there are signs to remind us to wash our hands. How does hand washing make a difference even when your hands look clean? Why not try this experiment to find out.

What You Do:

- 1 . Set it up: This works best if you and your child set up the experiment after a trip to the playground (or other similarly dirt-laden fun) and before they wash hands.
- 2 . Ask your child to “wipe” off his or her hands to get rid of visible dirt.
- 3 . Label two sandwich bags: “Touched” and “Not Touched.”
- 4 . Let your child use the tongs to remove a slice of bread from the wrapped loaf and place in the sandwich bag marked “Not touched.”
- 5 . Let your child take another slice of bread and rub his or her hands thoroughly on both sides of the bread. He or she should put this slice into the bag labelled “Touched.” Before zipping the bag, allow your child to give one to two gentle mists of water into each bag. Zip the bags and tape or place on a shelf, in a closet, or inside a cupboard. Check the bags every few days. Which one grows the most mould first?

What You Need:

- Two or more slices of wheat or dark bread.
(White bread takes longer to grow mould because it has so many preservatives in it, unless, of course, it’s homemade!)
- Zipped sandwich bag for each slice of bread
- Tongs
- Water spray

The Handwashing Song *(To the Tune of*

Frere Jacques)

Over, under

Over, under

Scrub between

Scrub between

Rinse the tops and bottoms

Rinse the tops and bottoms

Hands are clean!

Hands are clean!

What's Going On?

Mould will grow on both slices, but much sooner on one slice. Help your child understand that the germs that he or she did not see on the “wiped-off” hands became food for the mould. Would we want to eat those germs? These germs are so easily passed on.

Please remind your children to wash their hands very regularly and hand sanitise when this is not possible. Can your child sing the Handwashing Song while scrubbing hands at the sink? It will keep them scrubbing long enough to get the germs off!

Council services update during four-week lockdown

Below is the latest list of Council services that will stay open/continue and those that will close during the lockdown.

Adults and Communities

- Leisure centres (close)
- Gyms (close)
- Swimming pools (close)
- Museums (close)
- Galleries (close)
- Libraries (close)
- Day centres (open)
- Day services (open)
- Public toilets (open).

Children and families

- Schools (open)
- Colleges (open)
- Registered childcare providers (open)
- Targeted access only to Family Hub and Youth Club activities
- Health visitor contacts in the Family Hubs to continue, by appointment only.

Growth, Enterprise and Environment

- Parks (open)
- Playgrounds (open)
- Dunsdale Recycling Centre (open)
- Employment Hubs at Skinningrove and Grangetown (open)
- Grangetown and Skinningrove Employment Hubs (open)

Corporate Resources

- Civil registration offices (open)
- Crematorium (open)
- Weddings/civil partnerships (exceptional circumstances only).

Dunsdale Recycling Centre introduces temporary booking system due to essential works

A temporary booking system is to be launched at Dunsdale Recycling Centre to prevent queues as essential sewage works are to be carried out.

The work to install a sewerage pipe to connect to tanks on the old landfill site adjacent to the recycling centre is due to start tomorrow and will take up to four weeks. It will affect the entrance road to the recycling centre which will reduce space. No vehicles will be allowed to queue on the main road for safety reasons.

From this Friday, residents must book a slot at a time of their choice when visiting the recycling centre and must still prove their address when arriving. From 11 November, no car will be admitted to the site without an appointment.

Appointments are available from 8am to 5pm, seven days a week, on a first-come first-served basis. Residents who do not have access to a computer or internet can book an appointment by calling 01642 774 774.

Permit type vehicles including vans, commercial vehicles or any vehicles with trailers are limited to the first 2 hours of the day only, and still need a permit to access the site. Details on permits can be found on the Council's website at www.redcar-cleveland.gov.uk

Other rules include:

- One person only per car (Blue Badge holders can be accompanied by a family member);
- Social distancing of at least 2 metres will be strictly enforced;
- Site employees will not be able to assist with unloading;
- A resident must enter all details on the booking form or their request will be cancelled.

To book an appointment, please visit www.redcar-cleveland.gov.uk

LOCAL AUTHORITY LOCKDOWN ADVICE Nov 5th – Dec 2nd